



Authorized SchureMed Distributor

**DB Surgical**  
DISTINCTIVE SURGICAL PRODUCTS

## Schure™ Socket XL

*Quite possibly the best operating room table clamp you have ever used!*

The revolutionary Schure™ Socket XL fits all standard operating room table side rails ( $\frac{3}{8}$ "W x  $1\frac{1}{8}$ "H). Quickly and easily connects and disconnects securely anywhere along the side rail, even over side rail stand off.

### Features

- Hardened clamping surface creates maximum clamping force stopping movement of all accessories
- Accepts any round mounting posts up to  $\frac{5}{8}$ " in diameter and rectangular mounting posts up to  $1" \times \frac{3}{8}"$
- 800 lb (363 kg) patient weight capacity

**#800-0134** Schure Socket XL

Each clamp sold separately.

Simplify  
your  
clamp  
inventory



Patented

Phone 954.340.2727 | Fax 954.340.1221 | [www.dbsurgical.com](http://www.dbsurgical.com) | [sales@dbsurgical.com](mailto:sales@dbsurgical.com)

12480 W. Atlantic Blvd., Ste 1, Coral Springs, FL 33071



## SpringLoc Clamp

*Instantly attaches to side rail quickly & smoothly*

The newly designed SpringLoc Clamp locks patient positioning devices and surgical equipment with a flat mounting post anywhere along an operating table side rail.

### **Features**

- Securely locks accessories with a flat 1" x 1/4" (2.5cm x .6 cm) mounting post
- Attaches easily to the operating table side rail without the need of table notches
- SpringLoc Clamp is easily removed without the need for a release lever
- 800 lb. (363 kg) patient weight capacity

**#800-0338** SpringLoc Clamp

*Each clamp sold separately.*





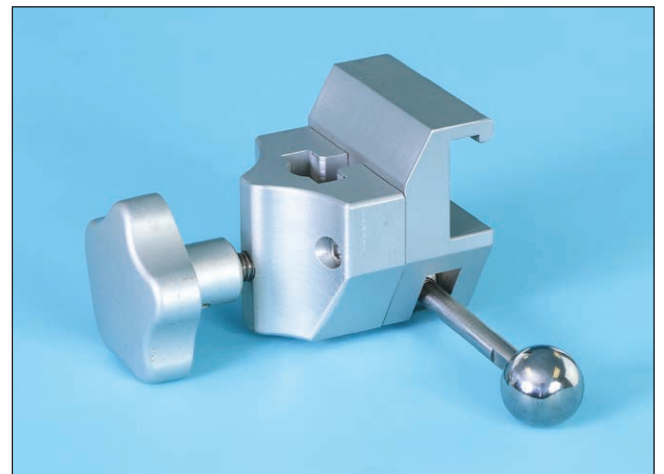
## CamLoc Clamp

*Attaches to the rail at any location over multiple drapes*

The CamLoc Clamp is designed for use in the sterile field and fully autoclavable.

### **Features**

- Accepts accessories with round posts up to  $\frac{5}{8}$ "D (1.6cm) and flat posts 1" x  $\frac{3}{8}$ " (2.5cm x .95cm)
- Attaches along the side rail, without the need of notches
- 500 lb (227 kg) patient weight capacity



**#800-0271** CamLoc Clamp

*Each clamp sold separately.*



# Schure™ Socket

*Industrial strength socket fits all OR tables*

Position surgical equipment to standard operating room table side rails without the need for side rail notches.

## **Features**

- Fits all OR tables with standard 1 $\frac{1}{8}$ "H x  $\frac{3}{8}$ "W (2.85cm x .95cm) side rails and round mounting posts up to  $\frac{5}{8}$ "D (1.6cm)
- Fits round mounting posts up to  $\frac{5}{8}$ "D
- Locks securely with a twist of the ergonomic handle
- 800 lb (363 kg) patient weight capacity

**#800-0006** Schure Socket

*Each clamp sold separately.*



Patented



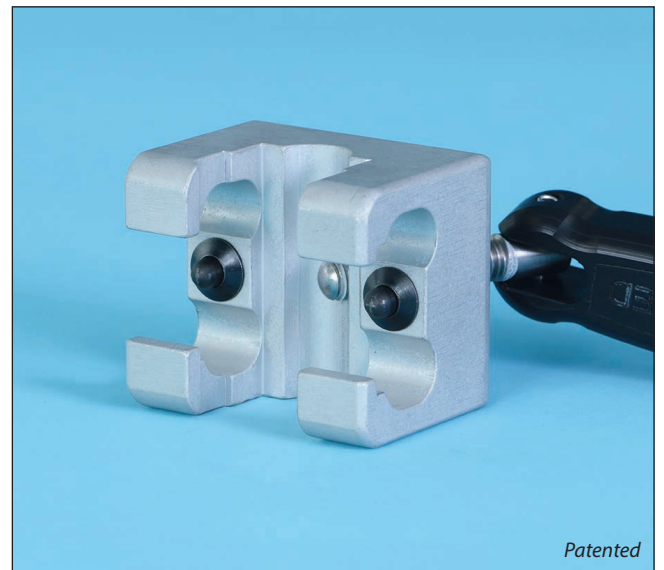
# Universal Rail Clamp

*Holds all accessories in the vertical or horizontal position*

Designed for a wide-range of purposes; affixing most operating room table accessories to most OR table designs and brands.

## **Features**

- Spring-loaded and attaches to OR table side rail anywhere along the rail
- Locks securely with a twist of the ergonomic handle
- Accepts both  $\frac{5}{8}$ "D (1.6cm) and 1" x  $\frac{3}{8}$ " (2.5cm x .95cm) flat bar mounting posts
- 350 lb (158 kg) patient weight capacity



Patented

**#800-0085** Universal Rail Clamp

*Each clamp sold separately.*



## Simple Clamp

---

*Attaches at OR table rail ends or notches*

The Simple Clamp locks surgical equipment and patient positioning accessories with flat blades anywhere along an operating table side rail.

### **Features**

- Accessories can be mounted vertically or horizontally
- Securely locks all accessories with flat 1" x 3/8" (2.5cm x .95cm) mounting blades anywhere along the table side rail
- 720 lb (327 kg) patient weight capacity

**#800-0228** Simple Clamp

*Each clamp sold separately.*





## Deluxe Rail Clamp

*Accessories can be mounted vertically or horizontally*

The Deluxe Rail Clamp locks all patient positioning accessories and surgical equipment anywhere along the operating table side rail.

### **Features**

- Attaches at OR table rail ends or notches
- Securely locks all accessories with 1" x 3/8" (2.5cm x .95cm) flat mounting post and round mounting posts up to 5/8"D (1.6cm) mounting blades anywhere along the table side rail
- 500 lb (227 kg) patient weight capacity

**#800-0248** Deluxe Rail Clamp

*Each clamp sold separately.*

